

Morintech-Practic Conference,
10.07.2019

Shipyard CAD/CAM system based on nanoCAD and BricsCAD

Nikolay N. Poleshchuk,
PhD Math.

<http://poleshchuk.spb.ru/cad/eng.html>
npol50@yandex.ru

20 years ago, AutoCAD

- Ritm-Hull CAD/CAM system for lofting and technological works (later **Ritm-Ship**), CRIST
- AutoCAD R10-R14, 2000-2007
- Targets: graphical and textual documents for parts manufacture, CNC programs for cutting, marking & sketching, bending data
- Used AutoCAD API, Dbase system
- 2014 **R-Ship+** system (supports AutoCAD 2010 – 2020), by a group of authors

AutoCAD Analogs

- 1998 OpenDWG Alliance
- 2003 Open Design Alliance (ODA)
- Support of work with DWG, other kinds of API
- 2008 nanoCAD (Russia)
- Similar: BricsCAD, ARES, IntelliCAD, ZWCAD, GstarCAD, ...

Selection: nanoCAD, BricsCAD.

Influence of Sanctions

- nanoCAD by JSC Nanosoft (Moscow) – tests started from v5.1
- nanoCAD Plus 11.0 – the last release
- BricsCAD by Bricsys (Belgium), with Russian interface – tests started from v14
- BricsCAD v19 – the last release
- BLADE – development environment for LISP programmer
- No buy restrictions, even after merging of Bricsys with Hexagon (Sweden)

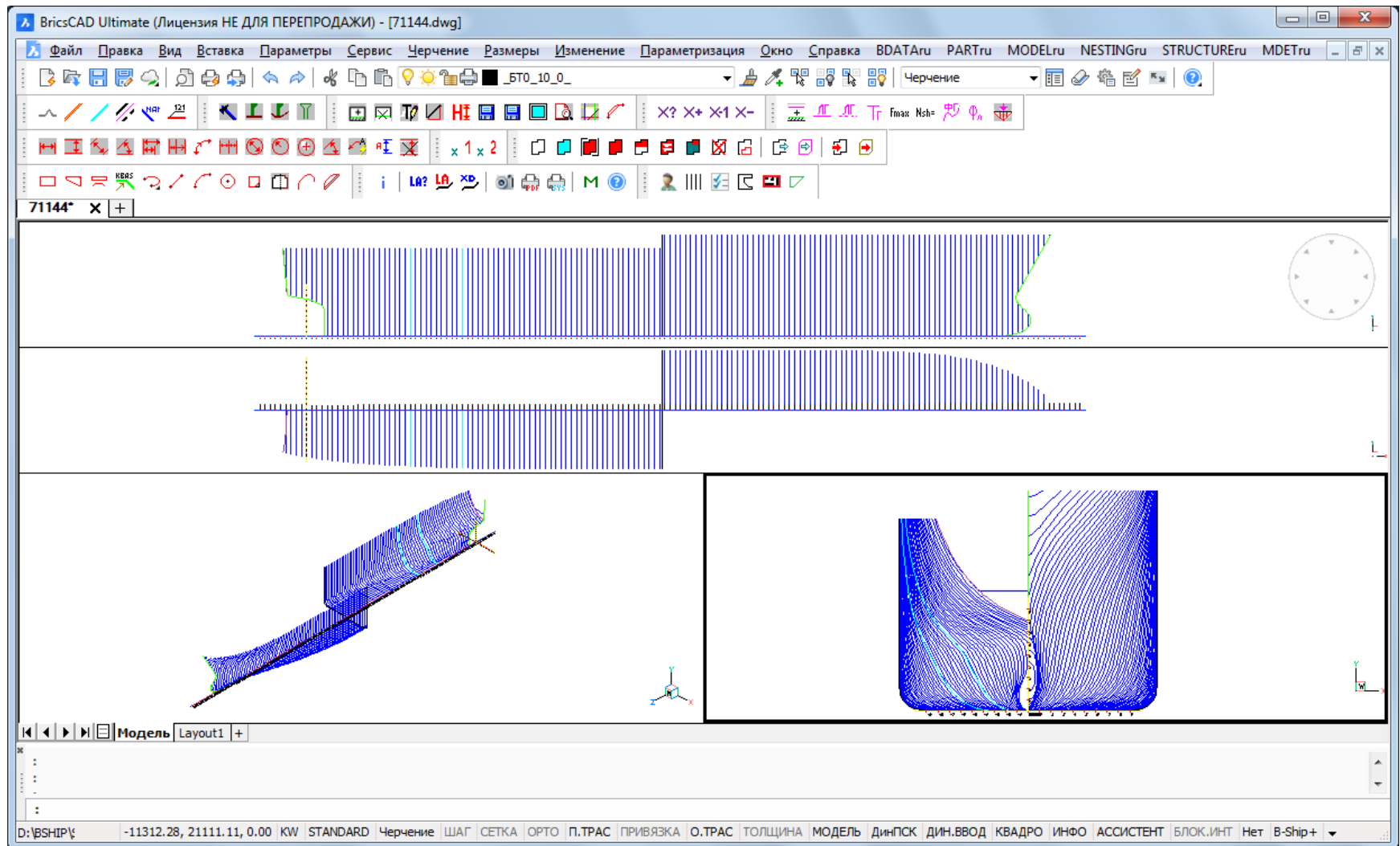
The Book “Way to nanoCAD” (2017, in Russian)



Download PDF: <http://www.nanocad.ru/book>

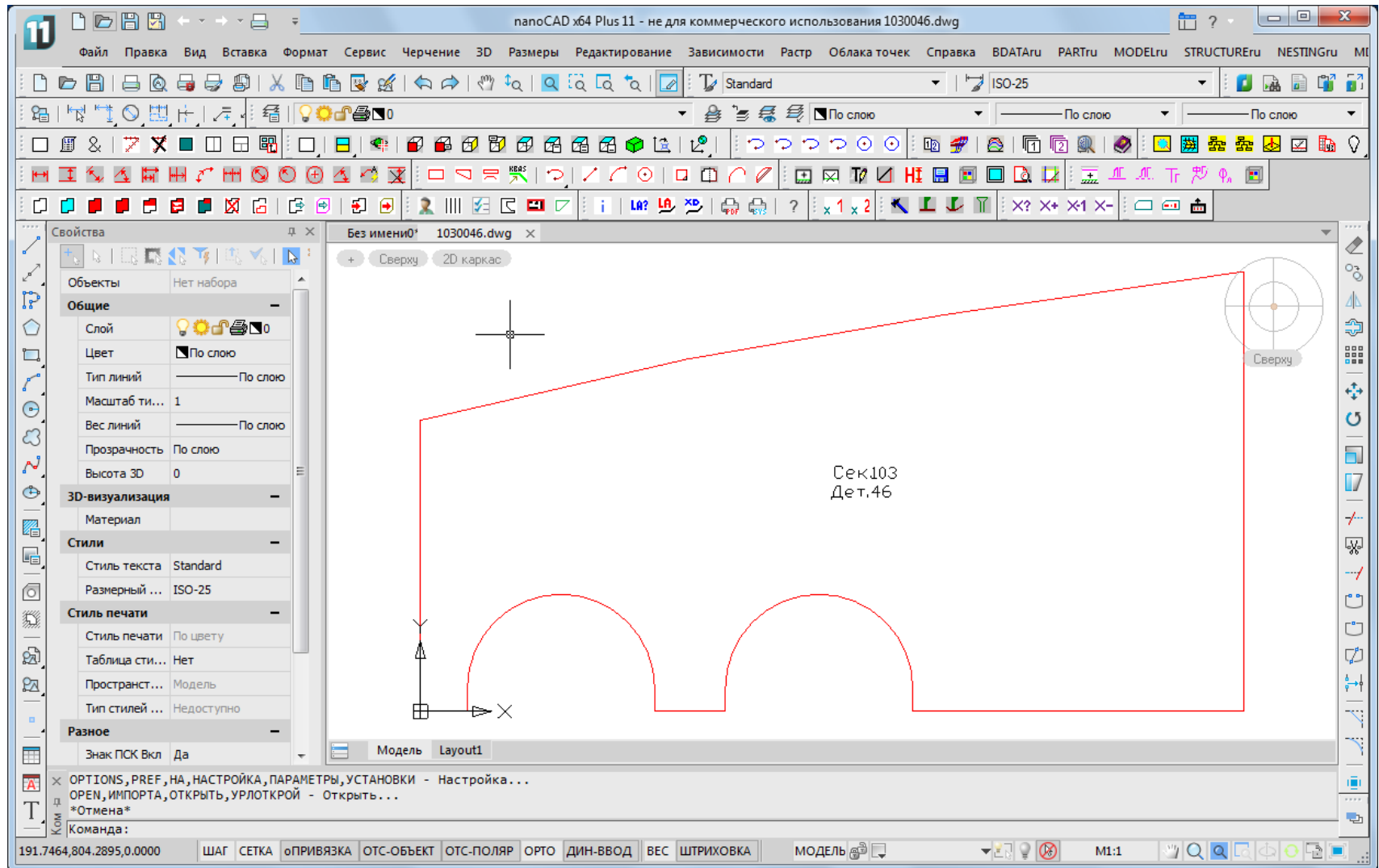
B-Ship+ System

Registered in Rospatent. Works inside BricsCAD.



N-Ship+ System

Registered in Rospatent. Works inside nanoCAD.



Both Systems Modules

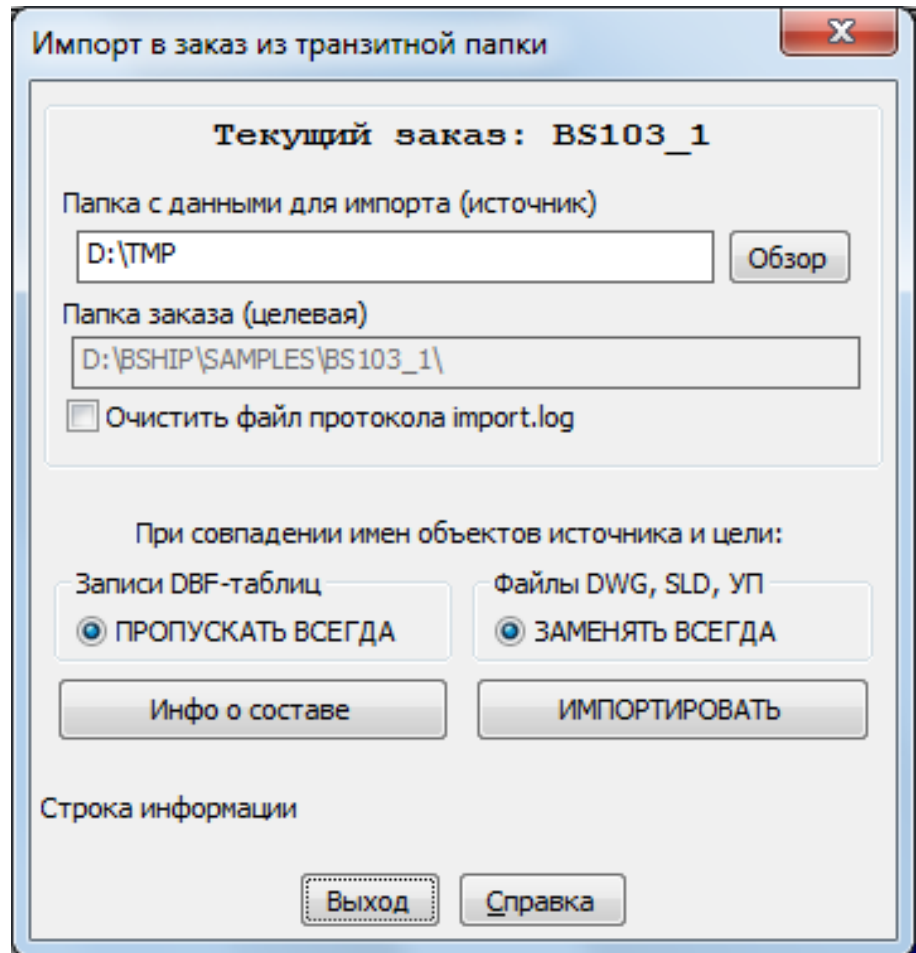
- **Bdata** – DB management
- **Model** – preparation of 3D model
- **Structure** – building decks and platforms
- **Part** – creation of sheet and profile parts
- **Mdet** – sheet development, assembly jigs
- **Nesting** – sheet nesting, CNC

Compatible with Ritm-Ship, R-Ship+.

English interface is possible partly.

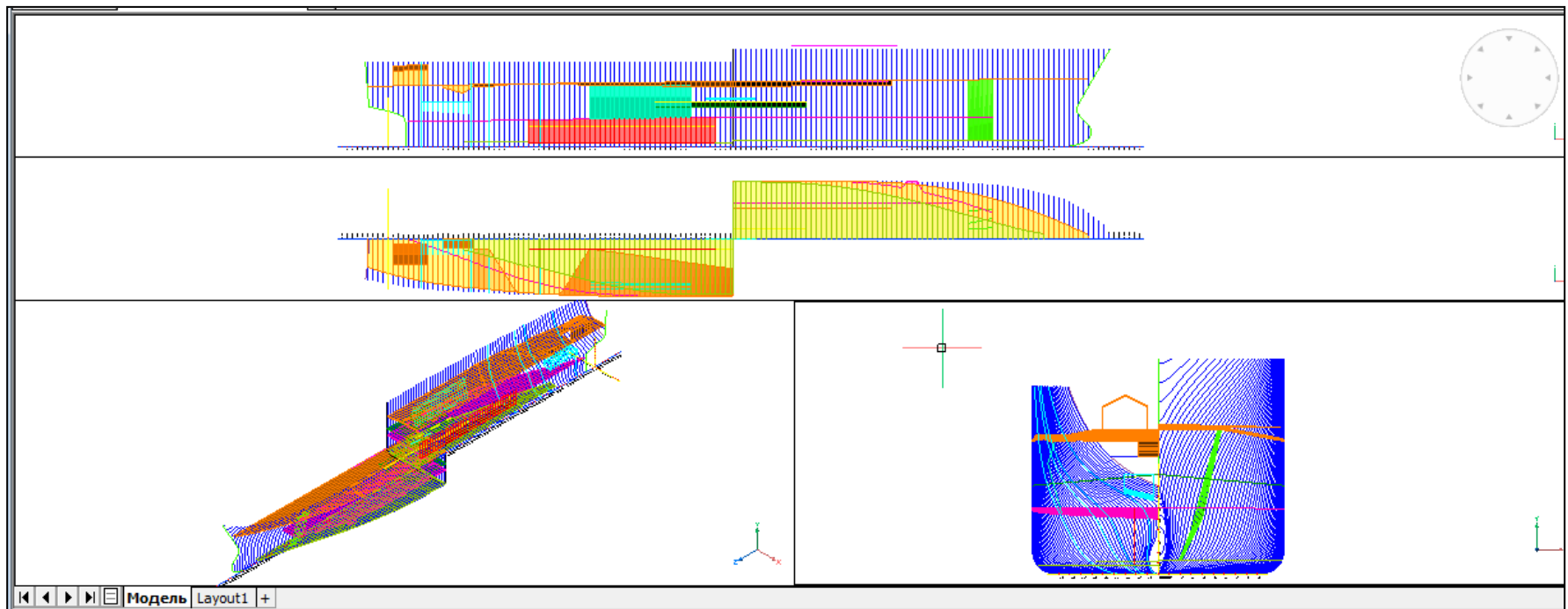
Service Management for Orders (Portions of the Ship Project)

- DBMS FoxPro, Bdata module
- Order creation, activation
- Work with tables of users, materials, drawings, parts, nesting maps etc.
- Export & import of orders



The Model & Structure Modules

- Spacing tables
- Preparation of geometrical model, building decks and platforms
- Loftbook, shell expansion



Creation of Parts

- Part module – creation of part contours, structurization of part drawing
- Inscriptions, allowances, bevels
- Holes insertion
- Generation of TNC documents (technological and norming card with part sketch) with the form, approved by the shipyard

Forms of Part Sketch

Проект BS103	Ном лист 15	Лист из 26	Затух. 1	Маршрутно-технологическая карта на деталь								Имя альбома		№ альбома	
Комплект	Чертеж			Ном секции	Наименование и размеры	МН дет	Кол.				Тех. масса 1 шт./кг	Масса общая, кг	Марка материала	Номер карты раскроя	Маршрут комплектации
	BS103-112-001			103	ЛИСТ 5В	46	1				79.4	79.4	РСВ	00800005	
Операция															
Объем работ															
Норма времени															
Разм. план	Кармеева О.О. 07.07.19														Лист
	Технолог														
	Подпись	Дата		Изм.	Лист	№ документа	Подпись	Дата							

The **Mdet** Module

- Creation of parts geometry in 3D model
- Additional builds
- Calculation of bending data
- Shell sheets development
- Work with node tables and welding seams

Nesting Maps, Scraps Handling

- Groups of joint nesting
- Automatic nesting of sheets
- Interactive nesting of sheets
- Defining cut route, output of CNC programs
- Forming TNC for nesting maps
- Nesting spreadsheets
- Scrap nesting

TNC for Nesting Map

МАТЕРИАЛ		КАРТА РАЗКРОЯ N 00800002							НЕФЕВЫЕ ОТХОДЫ шт.				
КОД	0122233	КОЛ-ВО ЛИСТОВ	МАССА кг		КОЭФФИЦ. РАЗКРОЯ	ДЛИНА РЕЗА м	ХОЛОСТОЙ ПЕРЕХОД м	ПОЛШИРИНА РЕЗА мм	КОЛ-ВО ПРОБНОВ	РАЗМЕРЫ мм	РАЗМЕРЫ мм	РАЗМЕР мм	РАЗМЕР мм
МАРКА	РСВ		ЛИСТА	ДЕТАЛЕЙ НА ЛИСТЕ									
СТАНДАРТ	1952												
РАЗМЕР ЛИСТА мм	8x1600x6000		603 кг							0.758			15
N Л.	НОМЕР ЧЕРТЕЖА	N ДЕТ.	КОЛИЧЕСТВО НА ЛИСТЕ		СЕКЦИЯ	НОМЕРА НАРИЗУЮТОВ	N Л.	НОМЕР ЧЕРТЕЖА	N ДЕТ.	КОЛИЧЕСТВО НА ЛИСТЕ		СЕКЦИЯ	НОМЕРА НАРИЗУЮТОВ
			ШТ.	МАССА						ШТ.	МАССА		
1	85103-112-001	40	1	258.1	103	3							
2	85103-112-001	324	1	117.94	103	2							
3	85103-112-001	344	1	82.8	103	1							
СОСТАВИЛ		ПРОВЕРИЛ											Лист
Коробочкина Н.Г.		Коробочкина Н.Г.							18.12.09				1
				Изм.	Лист	N документа		Подпись	Дата				

Excel Spreadsheets

[illegible]

BSB (OEM) Version

- Creation of OEM version for B-Ship+ is being investigated. In such a case customer need not to buy BricsCAD, because all the necessary graphical kernel functions will be integrated into B-Ship.

BSB = BricsCAD Solution Build (OEM)

License Types for B-Ship+, N-Ship+

- Temporary, constant
- Single place, network
- Combined
- Single place with a possibility of transfer to another computer
- Trial

User Documentation

See <http://poleshchuk.spb.ru/cad/> (now only in Russian).

PDF docs are downloadable:

- Administrator's guide
- Bdata
- Model
- Structure
- Part
- Mdet (for N-Ship+ is now not accessible)
- Nesting (for N-Ship+ is now not accessible)

Technical support during 1 year.

Contacts



- InterCAD Co.
- IE Poleshchuk N.N.
- npol50@yandex.ru
poleshchuk@peterlink.ru
[http://
poleshchuk.spb.ru/cad/
eng.html](http://poleshchuk.spb.ru/cad/eng.html)

Thank you for your attention!